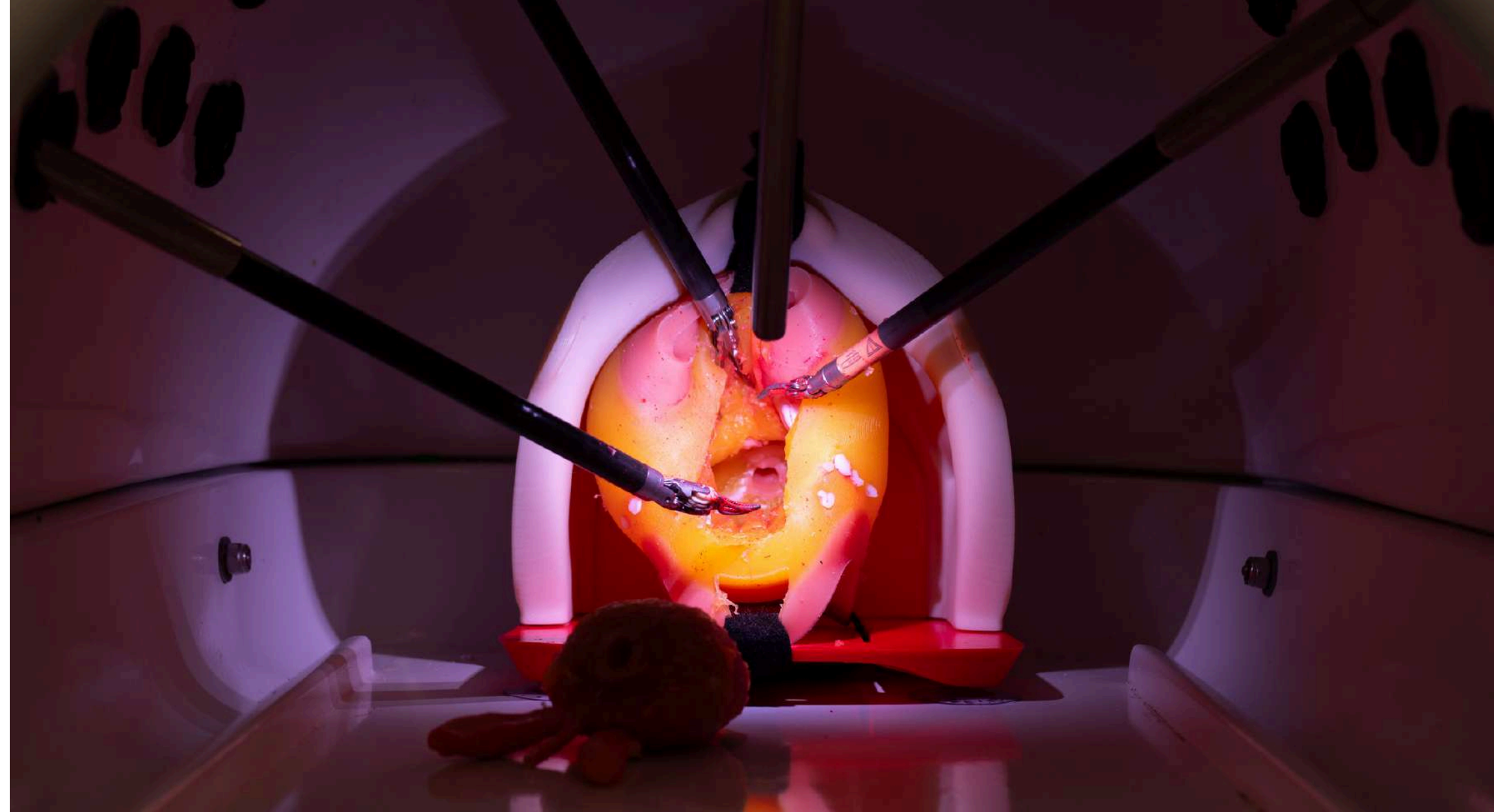


SIMULATION & TRAINING



ROBOTIC SURGERY

RADICAL PROSTATECTOMY

PARTIAL NEPHRECTOMY

HYSTERECTOMY & MYOMECTOMY

LOBECTOMY



What we do?

Advanced synthetic models for surgical simulation



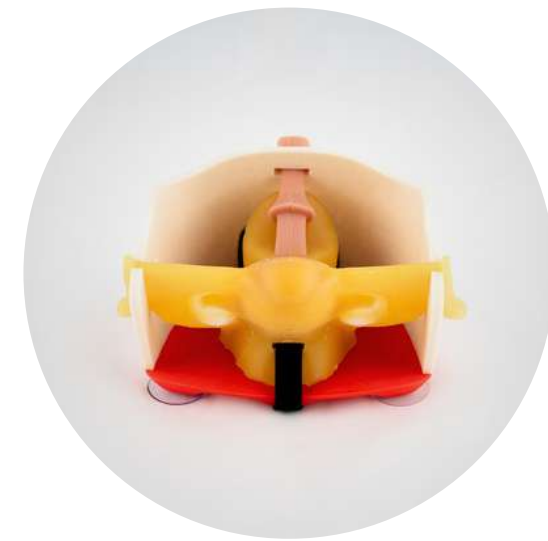
Partial Nephrectomy



Radical Prostatectomy



Perfused Models



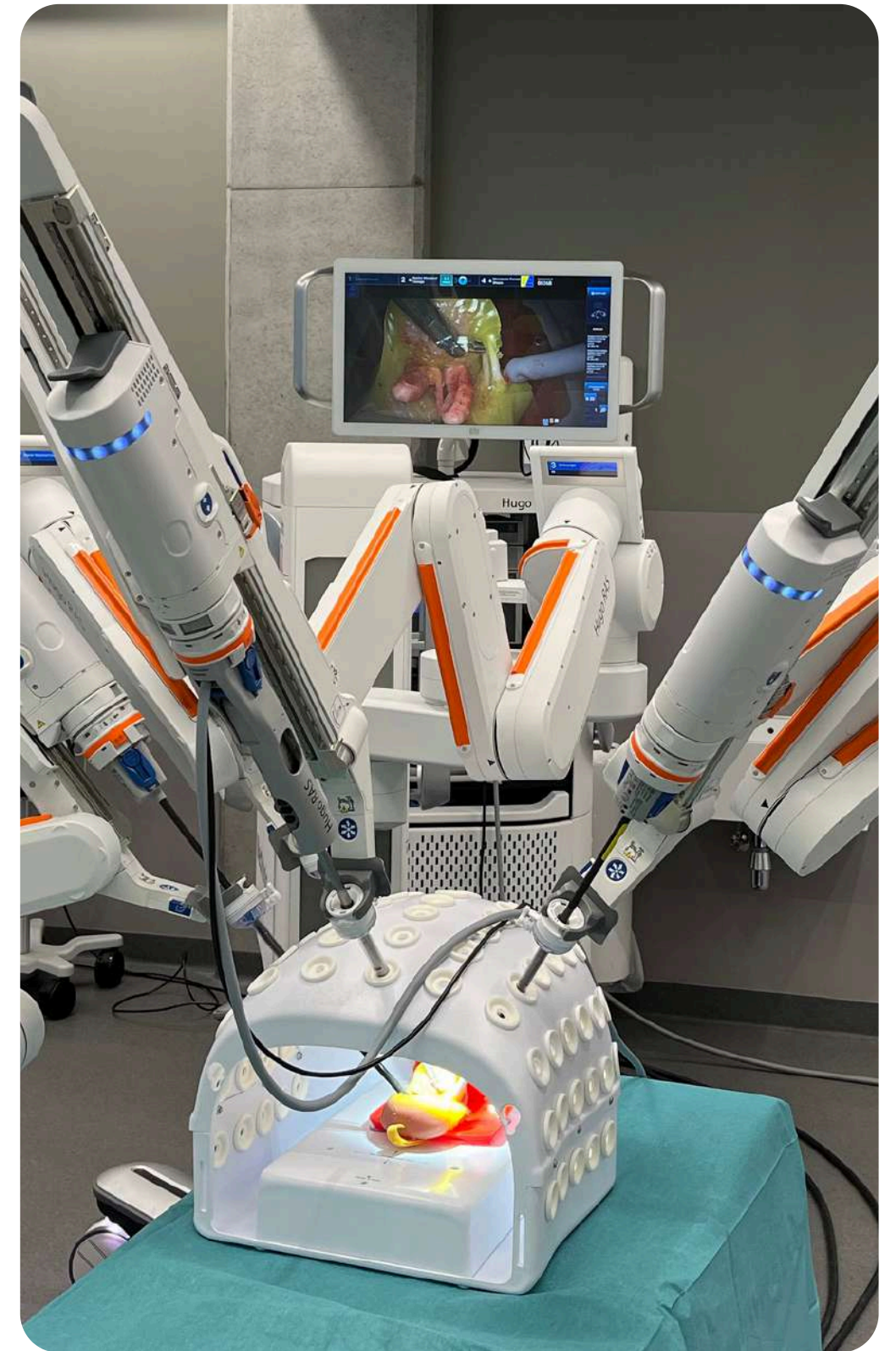
Hysterectomy



Miomectomy



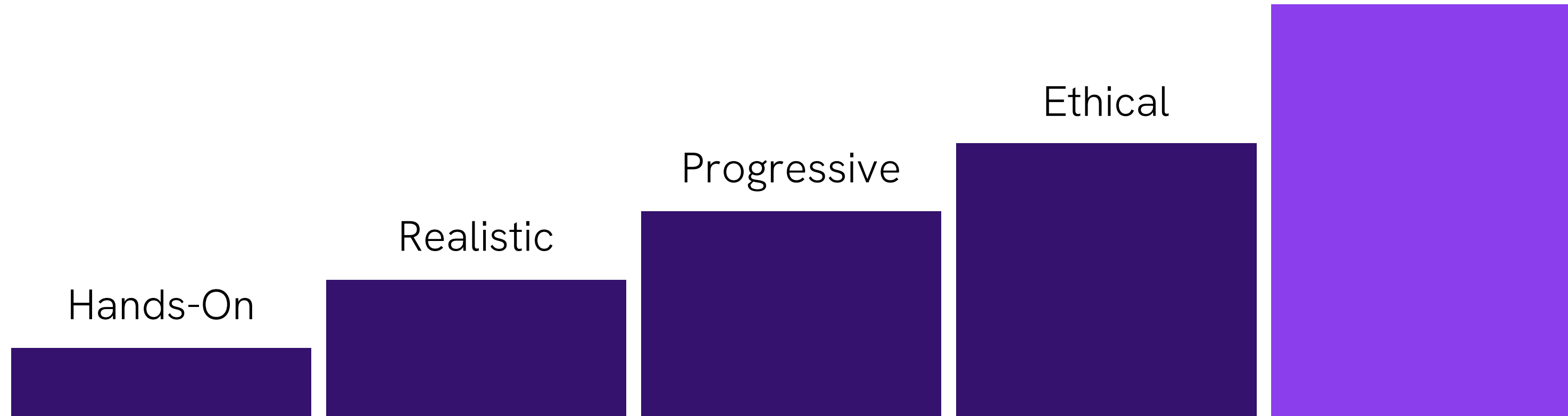
Lobectomy



Why we do it?

Need of better training tools

Standardized, measurable,
and reproducible practice.



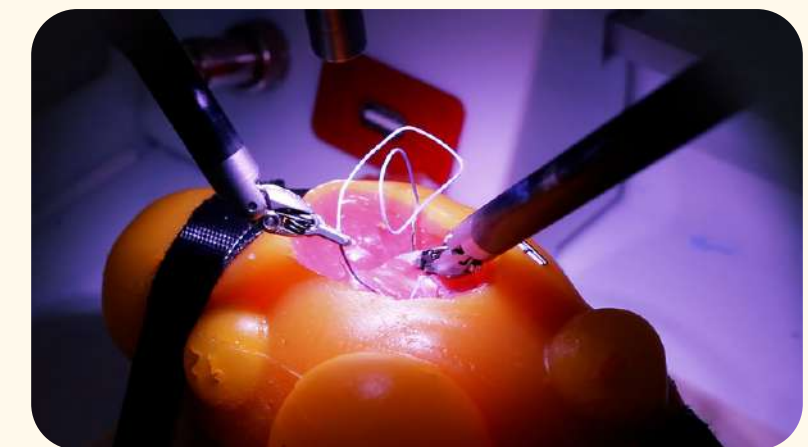
Tasks modules



Animal models



3D models



Our journey...

2021: We started with the focus on **laparoscopic surgery** (LatAm demands).



Chile



Mexico



Spain



Panama



Costa Rica

2024/25: We moved forward to solving **robotic surgery** training needs (worldwide).



IRCAD (France)



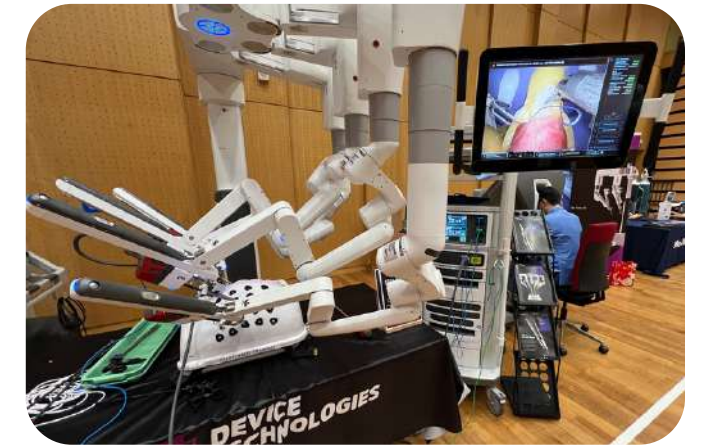
ORSI Academy (Belgium)



Guy's Hospital (UK)



AAU Congress (Qatar)



SUA Workshop (Singapore)

Hands-on training models - URO

Prostate phantom for radical prostatectomy + radical cystectomy



Includes the bladder, neurovascular bundles, seminal vesicles, prostatic pedicles, puboprostatic ligaments, and dorsal venous complex. Modular section to practice vesicourethral anastomosis.

Compatible with all Radical Prostatectomy approaches, including Retzius-Sparing.

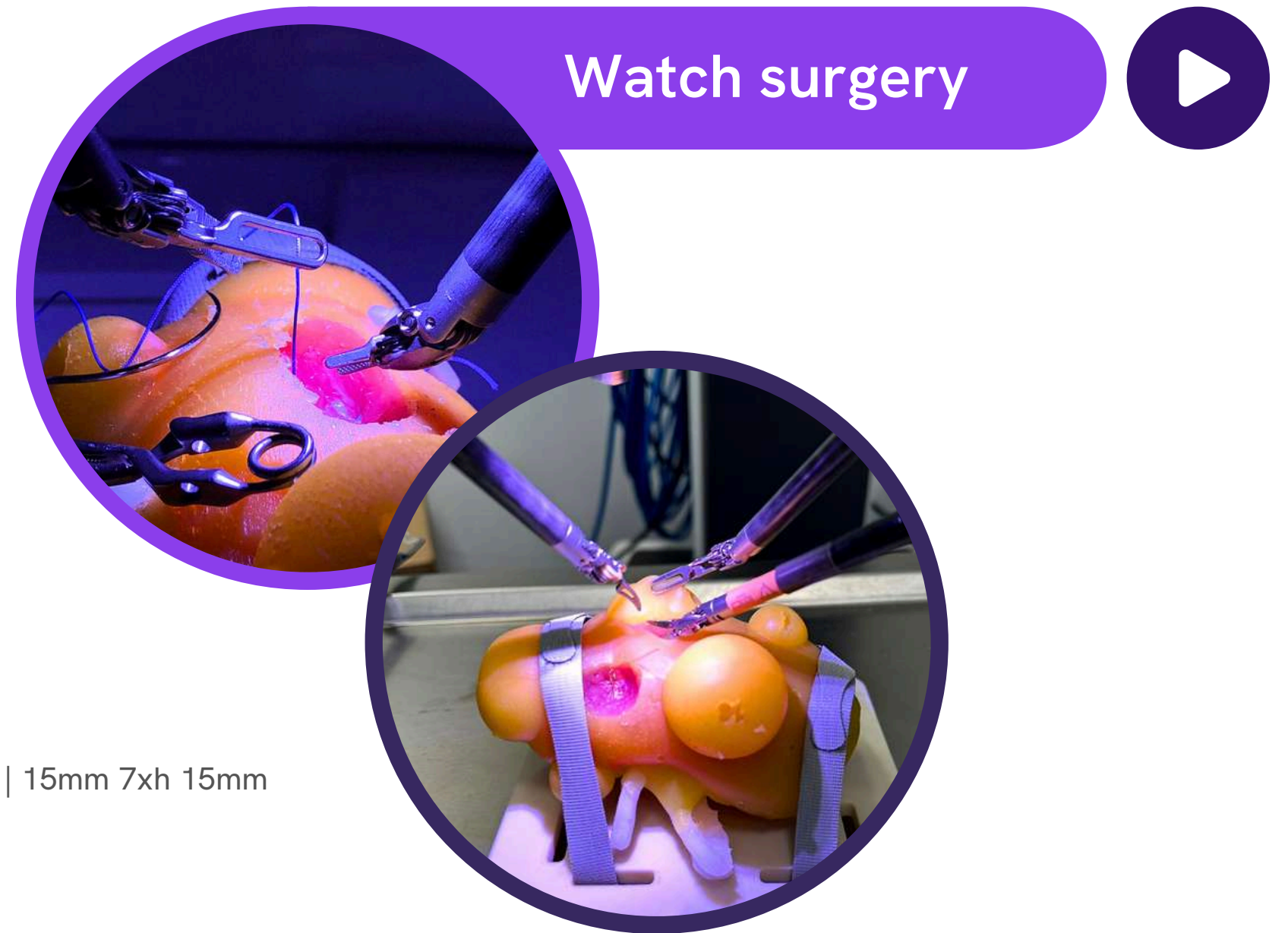


Watch surgery



Hands-on training models - URO

Kidney phantom for partial nephrectomy - 11 tumors & 2 cysts



Contains 11 tumors and 2 cysts. Tumors RENAL scores are as follows: 15mm 4a | 20mm 10xh | 15mm 7xh 15mm 4a | 35mm 7x | 35mm 7a | 15mm 9x | 15mm 4p | 15 mm 5p | 16mm 7p | 15mm 4p

The model is completely surrounded by a fat layer offering multiple surgical scenarios.

Hands-on training models - URO

Hemi-Kidney model with perfusion for partial nephrectomy



Includes 2x 25mm tumors RENAL score 7x and a connector for blood perfusion simulation.
The model has a modular plug-and-play design to allow standardized training for multiple trainees.

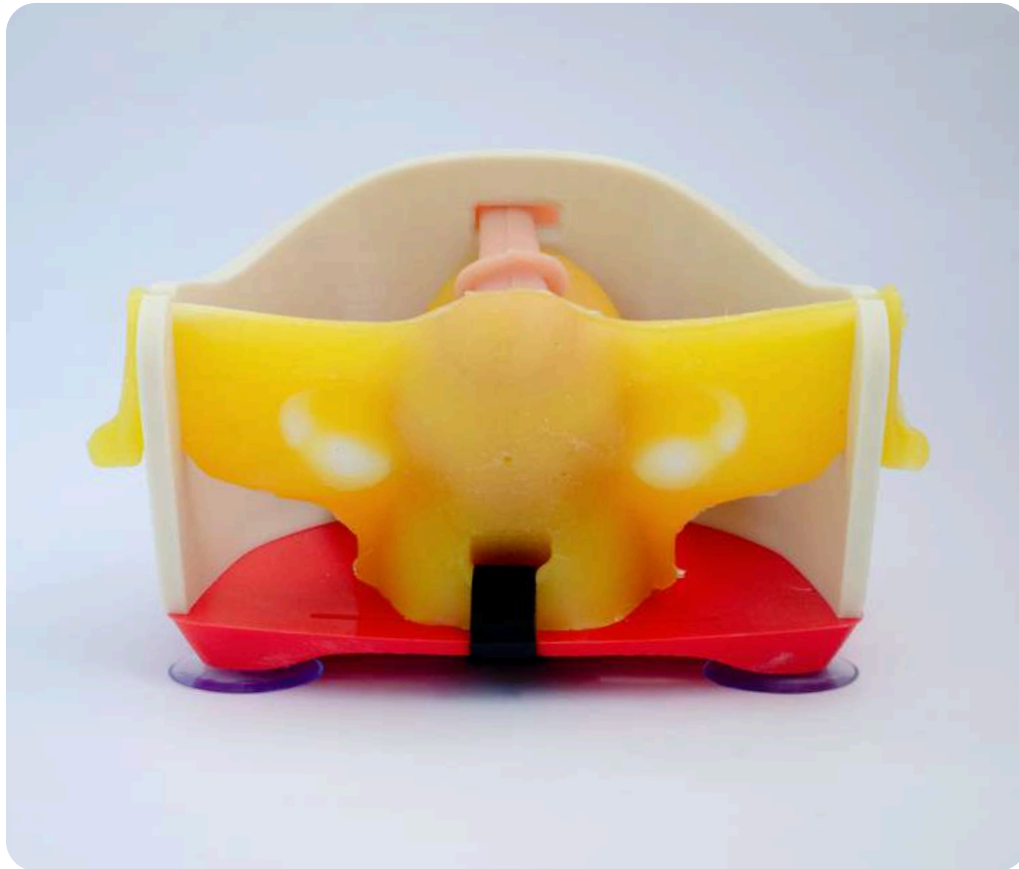


Watch surgery

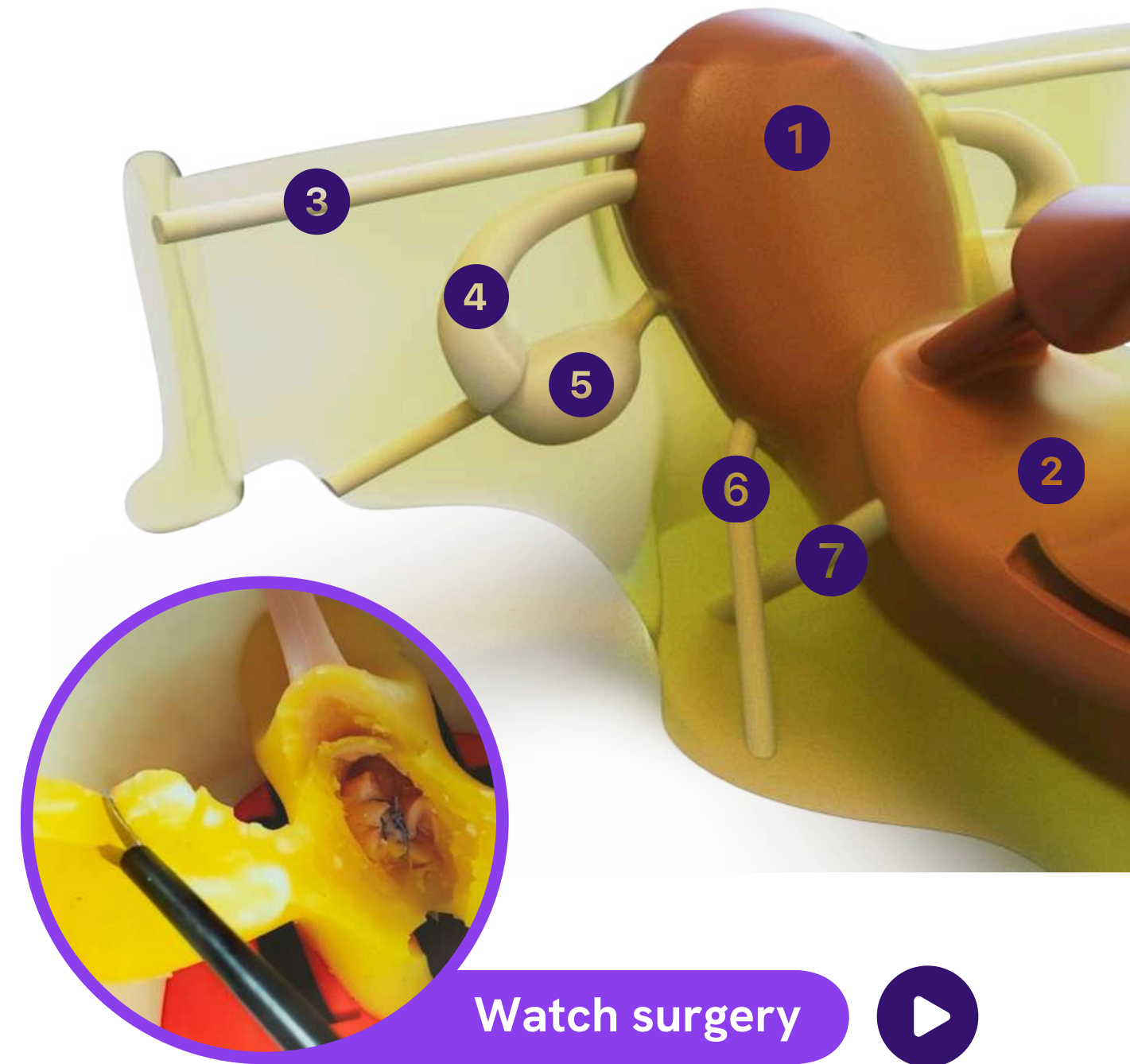


Hands-on training models - GYN

Uterus phantom for hysterectomy



- 1 Uterus
- 2 Bladder
- 3 Round ligament
- 4 Fallopian tube
- 5 Ovary
- 6 Uterine Artery
- 7 Ureter



Watch surgery



Hands-on training models - GYN

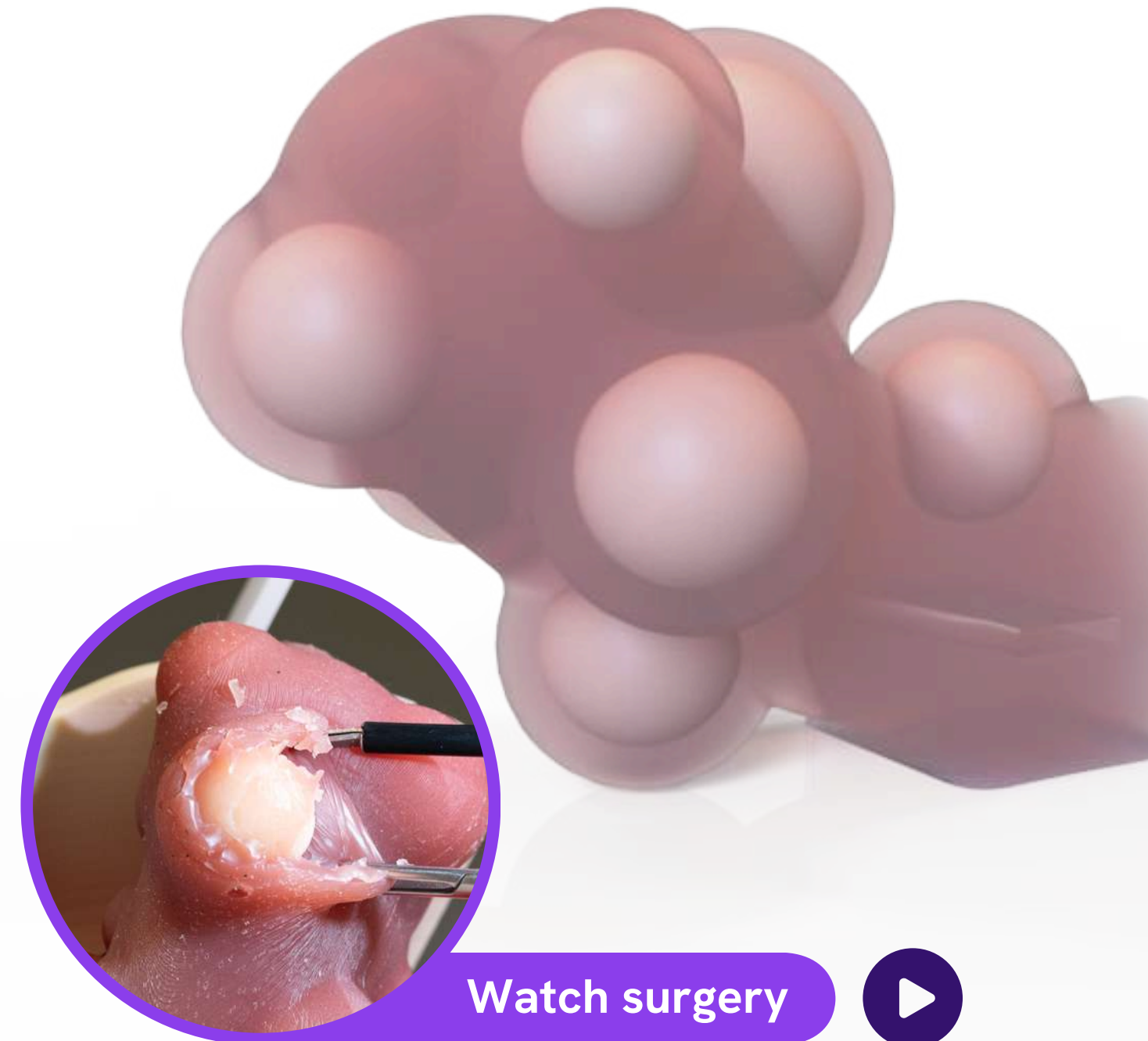
Uterus phantom for myomectomy



Includes a uterus similar to the hysterectomy model with 8 myomas:

- **Basic level (anterior myomas):** M1 of 30mm (FIGO 5) and M2 of 21mm (FIGO 8)
- **Intermediate level (lateral myomas):** M3 of 15mm (FIGO 6), M4 of 21mm (FIGO 5), M5 of 15mm (FIGO 5) and M6 of 21mm (FIGO 6)
- **Advanced level (posterior myomas):** M7 of 21mm (FIGO 5) and M8 of 21mm (FIGO 5)

Each myoma presents a different level of difficulty for progressive and continuous training.

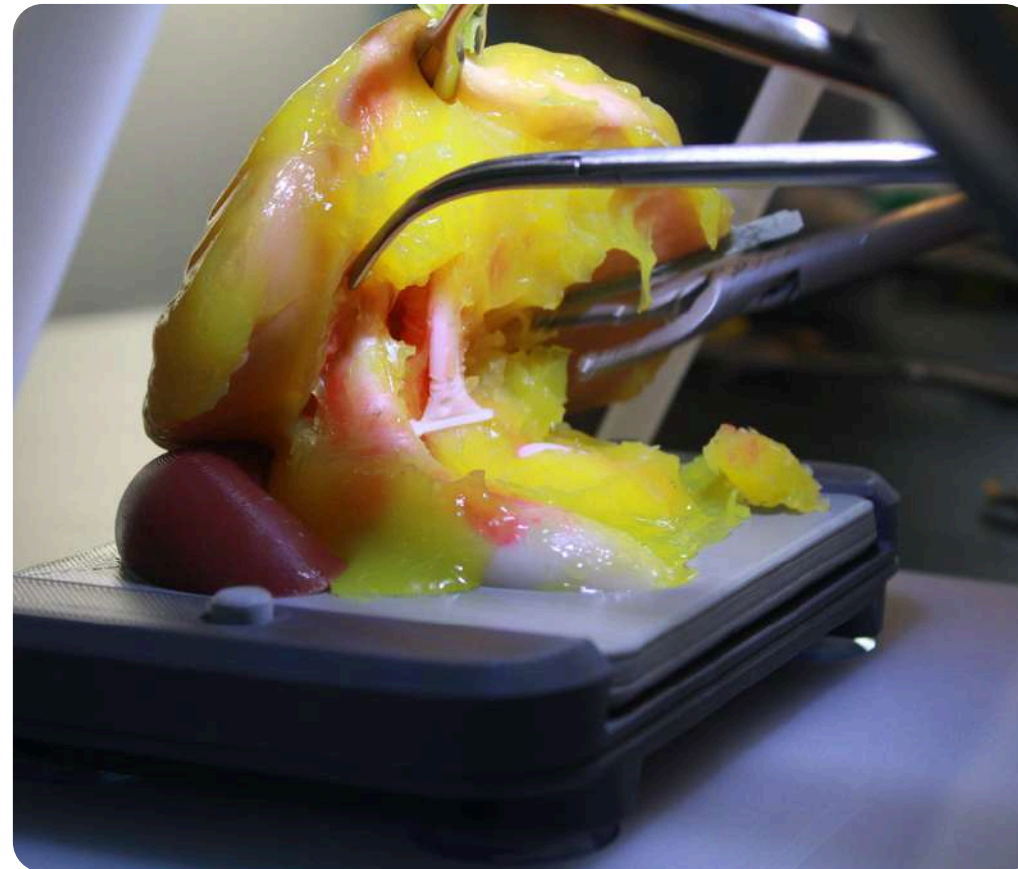
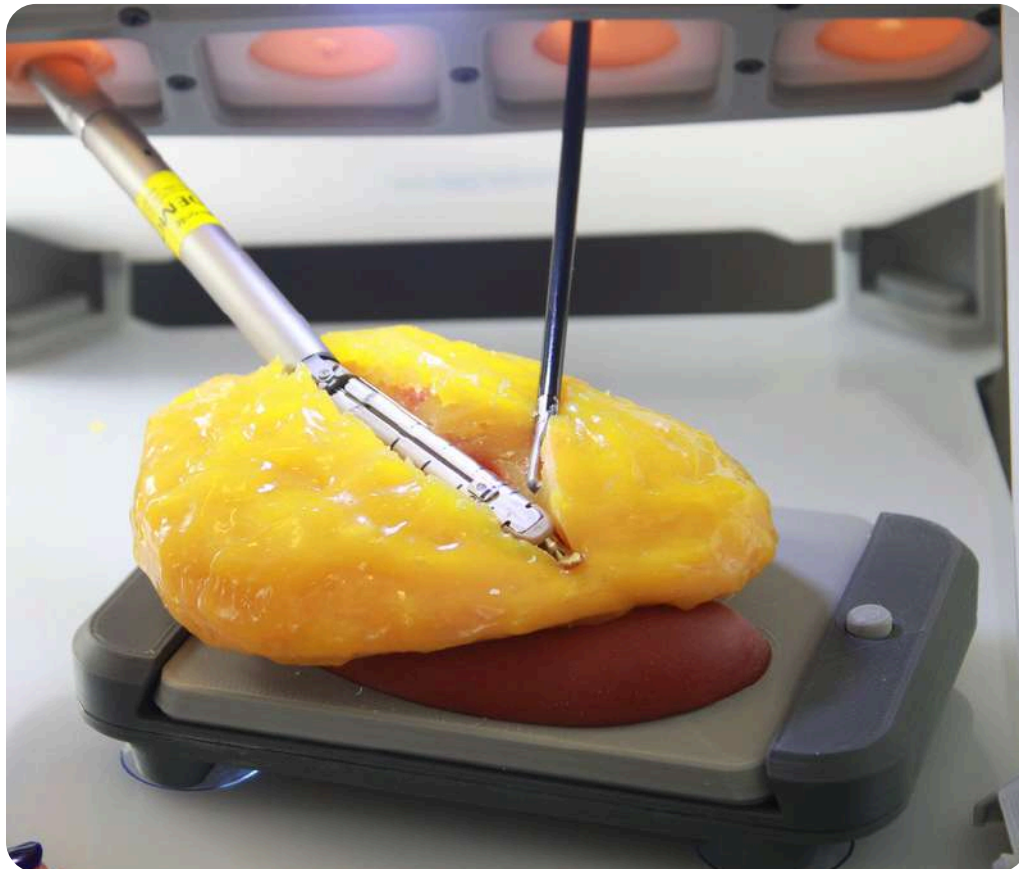


Watch surgery



Hands-on training models - THORAX

Lung phantom for left side lobectomy



The left lung model includes all lobes for upper or inferior left lobectomy. Represented anatomy:

- Left pulmonary artery
- Left pulmonary vein
- Aorta
- Bronchi

Watch surgery



USERS | UROTRAINER

HTAL. ÁNGELES
(MONTERREY)



CONGRESO SDU
(SANTO DOMINGO)



INST. DEL CÁNCER
(SANTIAGO)



UHEALTH (MIAMI)



UCL (LONDON)



MARIA REGINA HOSP.
(CLUJ-NAPOCA)



DISTALMOTION
(GENEVA)



SS INNOVATIONS
(NEW DELHI)



SIUT (KARACHI)



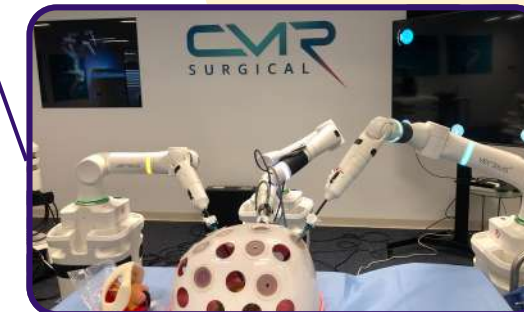
URC SENGKANG HOSP.
(SINGAPORE)



AAU (CÓRDOBA)



CMR SURGICAL
(DUBAI)



URO - Suggested Academic Programs

Partial Nephrectomy Training

1 kidney model for every 3 trainees

Approx. 3hs hands-on training

Trainee #1

- PN 1 - Tumor #4 15mm RENAL 4a
- PN 2 - Tumor #5 35mm RENAL 7x
- PN 3 - Tumor #2 20mm RENAL 10xh

Trainee #2

- PN 1 - Tumor #9 15mm RENAL 5p
- PN 2 - Tumor #6 35mm RENAL 7a
- PN 3 - Tumor #1 15mm RENAL 5a

Trainee #3

- PN 1 - Tumor #12 15mm RENAL 4p
- PN 2 - Tumor #10 16mm RENAL 7p
- PN 3 - Tumor #7 15mm RENAL 9x

Radical Prostatectomy Training

1 prostate model for each trainee

Approx. 4hs hands-on training

- Periprostatic fat dissection
- Dorsal vein suturing
- Identifying the plane between prostate & bladder
- Bladder cuff dissection
- Performing neurovascular bundle (NVB) sparing
- Performing prostatic pedicle dissection
- Completing radical prostatectomy
- Urethro-vesical anastomosis

Suitable for both anterior, posterior (Retzius-Sparing), and combined approaches.

GYN - Suggested Academic Programs

Hysterectomy Training

1 hysterectomy model for each trainee

Approx. 3hs hands-on training

- Identification of anatomical reference points.
- Dissection and cutting of the round ligaments, fallopian tube, and ovarian ligament.
- Dissection and cutting of the uterine artery.
- Identification and preservation of the ureter.
- Separation and dissection of the uterus from the bladder and identification of the upper part of the vagina.
- Uterus resection and closure of the vaginal cuff.

Myomectomy Training

1 myomectomy model for every 2 trainees

Approx. 4hs hands-on training

Basic level:

- Trainee #1 – Anterior myoma of 30mm
- Trainee #2 – Anterior myoma of 21mm

Intermediate level:

- Trainee #1 – Lateral myoma of 15mm
- Trainee #2 – Lateral myoma of 15mm
- Trainee #1 – Lateral myoma of 21mm
- Trainee #2 – Lateral myoma of 21mm

Advanced level:

- Trainee #1 – Posterior myoma of 21mm
- Trainee #2 – Posterior myoma of 21mm

THORAX - Suggested Academic Program

Left Lobectomy Training

1 lung model for each trainee

Approx. 3hs hands-on training

Pulmonary Fissure Dissection

- Visual identification of the oblique fissure.
- Partial dissection to expose the junction between lobes.

Identification of Anterior and Posterior Lobar Junctions

- Visual identification of the connections between lobes.

Clipping and Separation of Lobar Junctions

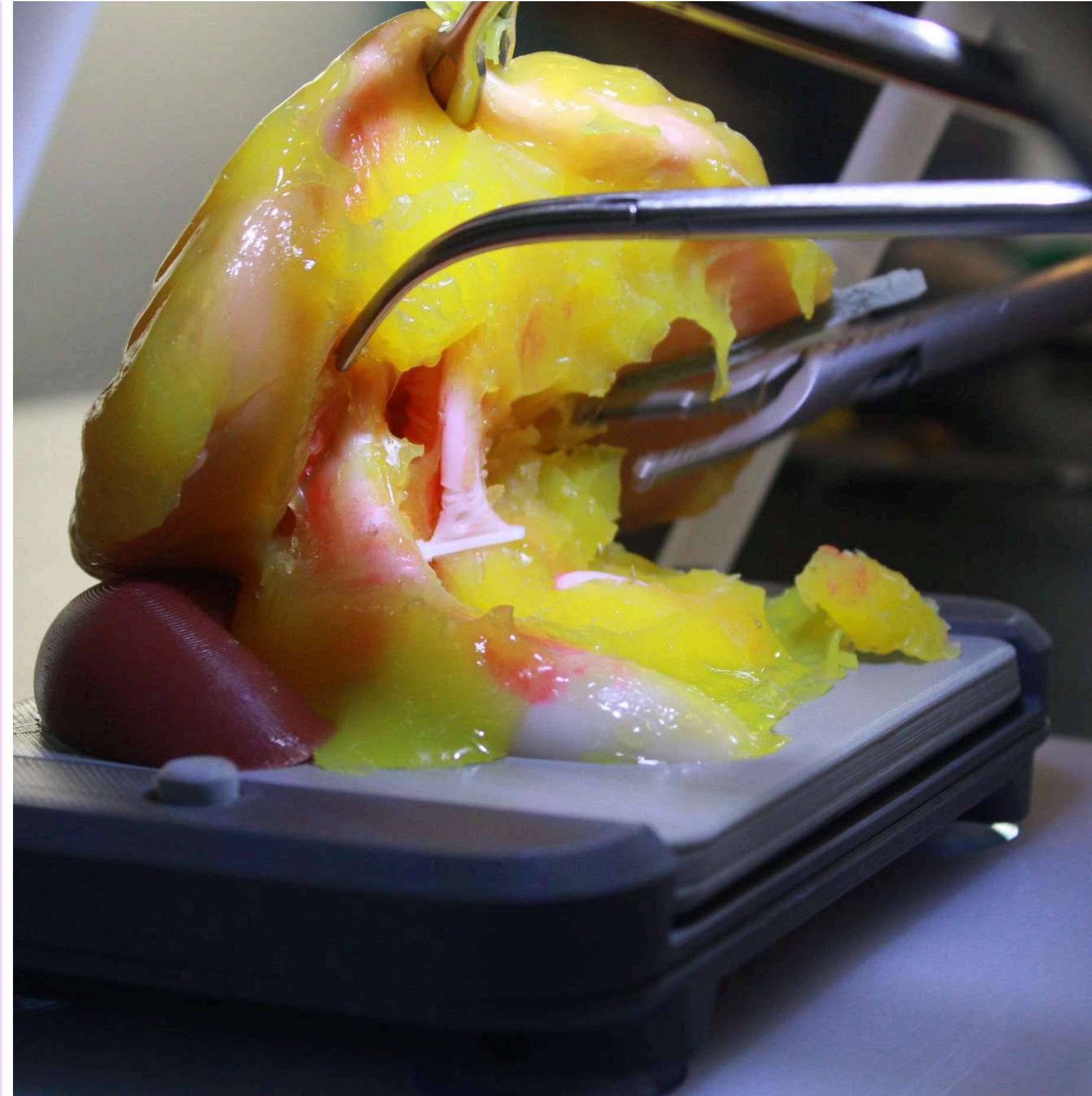
Dissection of Pulmonary Artery Branches, Pulmonary Vein, and Bronchi

- Identification of the structures.
- Differentiation of vessels and bronchi using anatomical landmarks.

Clipping and Division of the Bronchus, Pulmonary Artery, and Pulmonary Vein

Lobe Removal and Final Check

- Extraction of the lower lobe using a retrieval bag.



Success Cases

Implementing Urotrainer' models for uro-oncology robotic surgical training



Desai Sethi Urology Institute University of Miami

Chad Ryan Ritch, MD, MBA

Prostate models have been used in hands-on exercises to introduce the new daVinci SP system to the urology team



University College London Hospitals

Ashwin Sridhar, MD

The Robotic Radical Prostatectomy fellowship includes 5 Urotrainer's prostate models for each fellow to guarantee continuous and standardized training



Regina Maria Cluj-Napoca Hospital

Iulia Andras, MD

Running an annual Course for Robot-Assisted Partial Nephrectomy that includes every year +10 urology residents from multiple cities



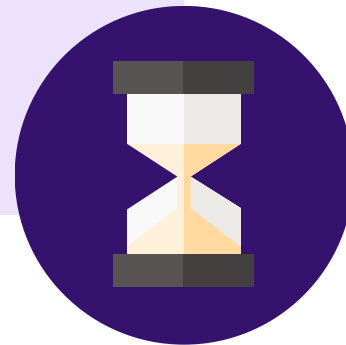
Deutsches Buenos Aires Hospital

Gonzalo Vitagliano, MD

Both prostate and kidney models have been implemented for robotic surgical skills development of 3rd and 4th-year urology residents

WHY Urotrainer ?

Superior training experience and flexibility



Multiple realistic scenarios with advanced levels for experienced surgeons.
Suture pads or E-BLUS exercises are practical but not motivating.



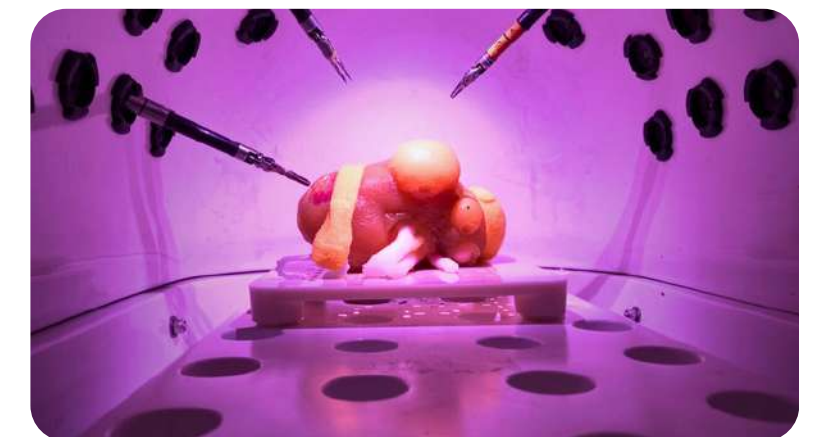
Easy to manipulate and to stock compared to hydrogel models.
Long expiration date (+12 months) and no refrigeration needed.



Cost-effective: Designed to train full surgical procedures step by step. Includes all anatomical structures and mimics real tissue properties.



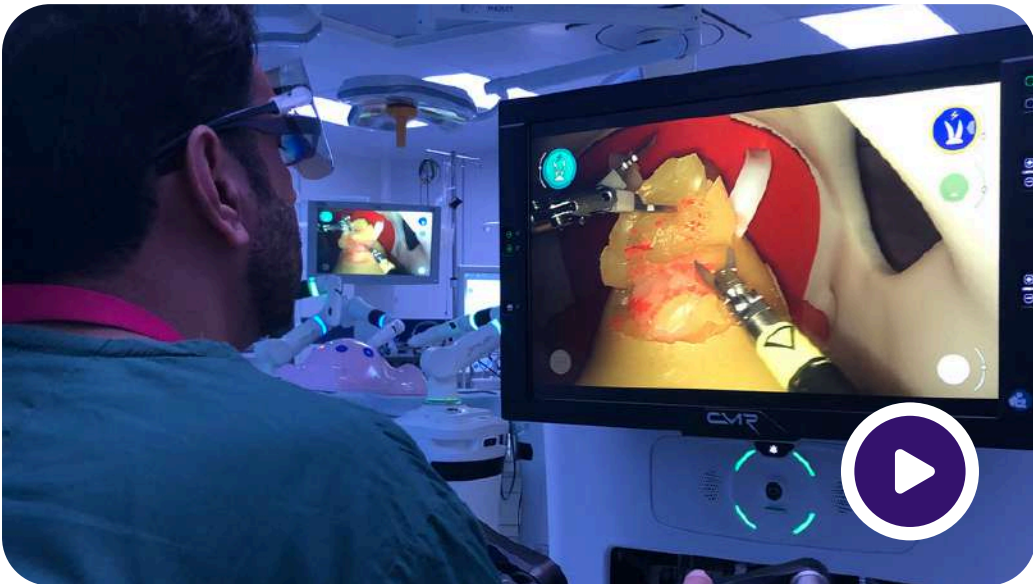
Best way to showcase surgical equipment.
High-realism and non-organic waste. Ethical cadaver-free simulation.



Surgical simulation videos



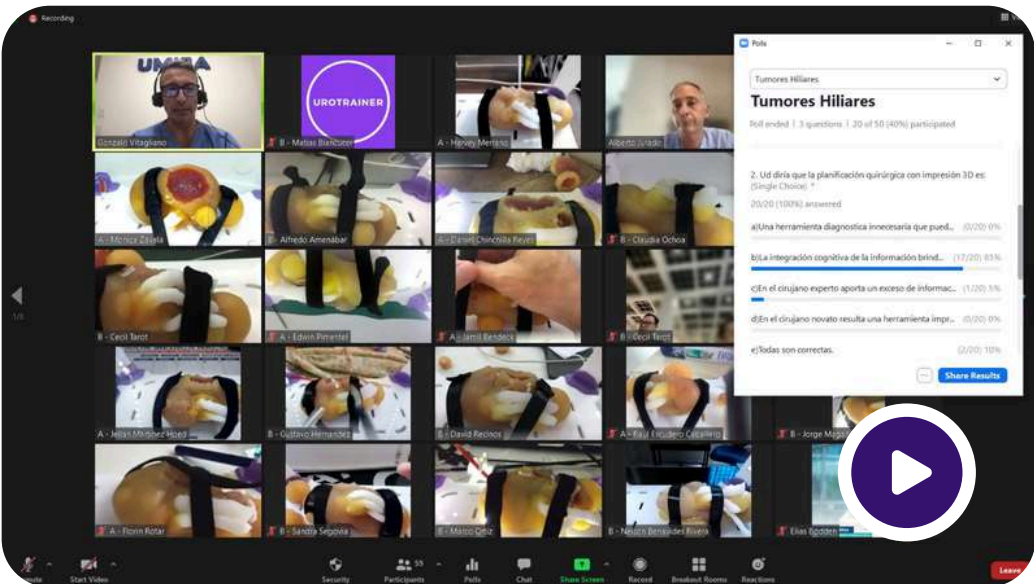
ROBOTIC SURGERY TRAINING



ROBOT-ASSISTED RADICAL PROSTATECTOMY



ROBOT-ASSISTED PARTIAL NEPHRECTOMY



REMOTE HANDS-ON METHODOLOGY

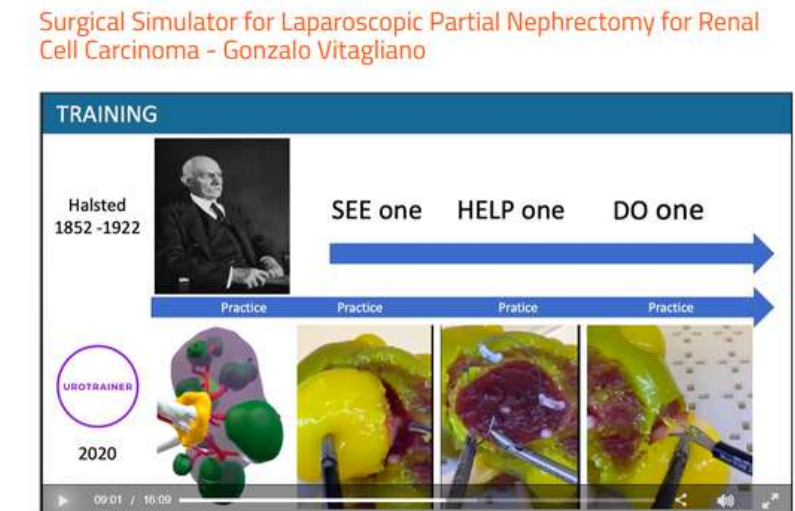
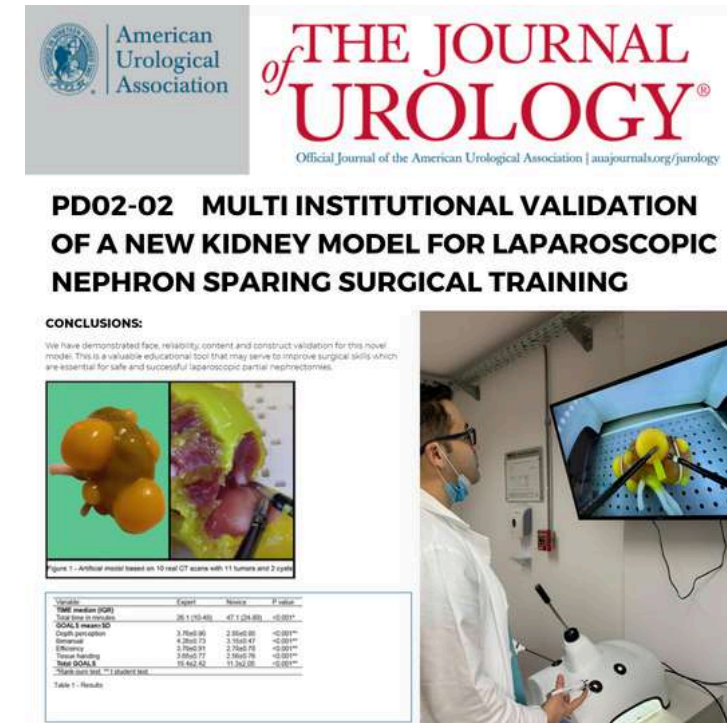


UROTRAINER HANDS-ON COURSES



RETZIUS-SPARING RADICAL PROSTATECTOMY

International & Scientific Validation



Users & Clients



Contact Us



simulation@urotrainer.com



+34 634 48 2092



www.urotrainer.com



[/company/urotrainer](https://www.linkedin.com/company/urotrainer)



[@urotrainer](https://www.instagram.com/urotrainer)

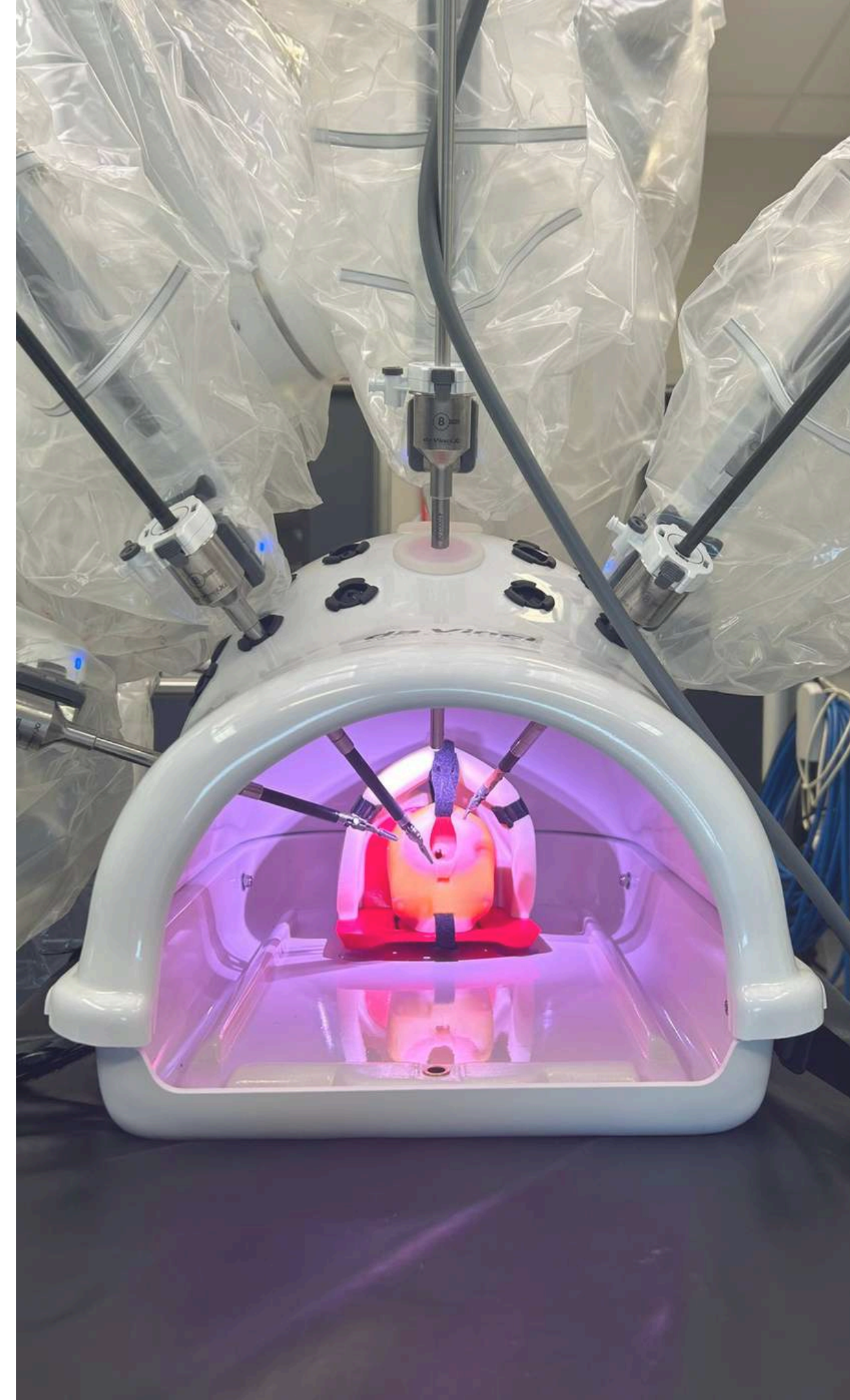


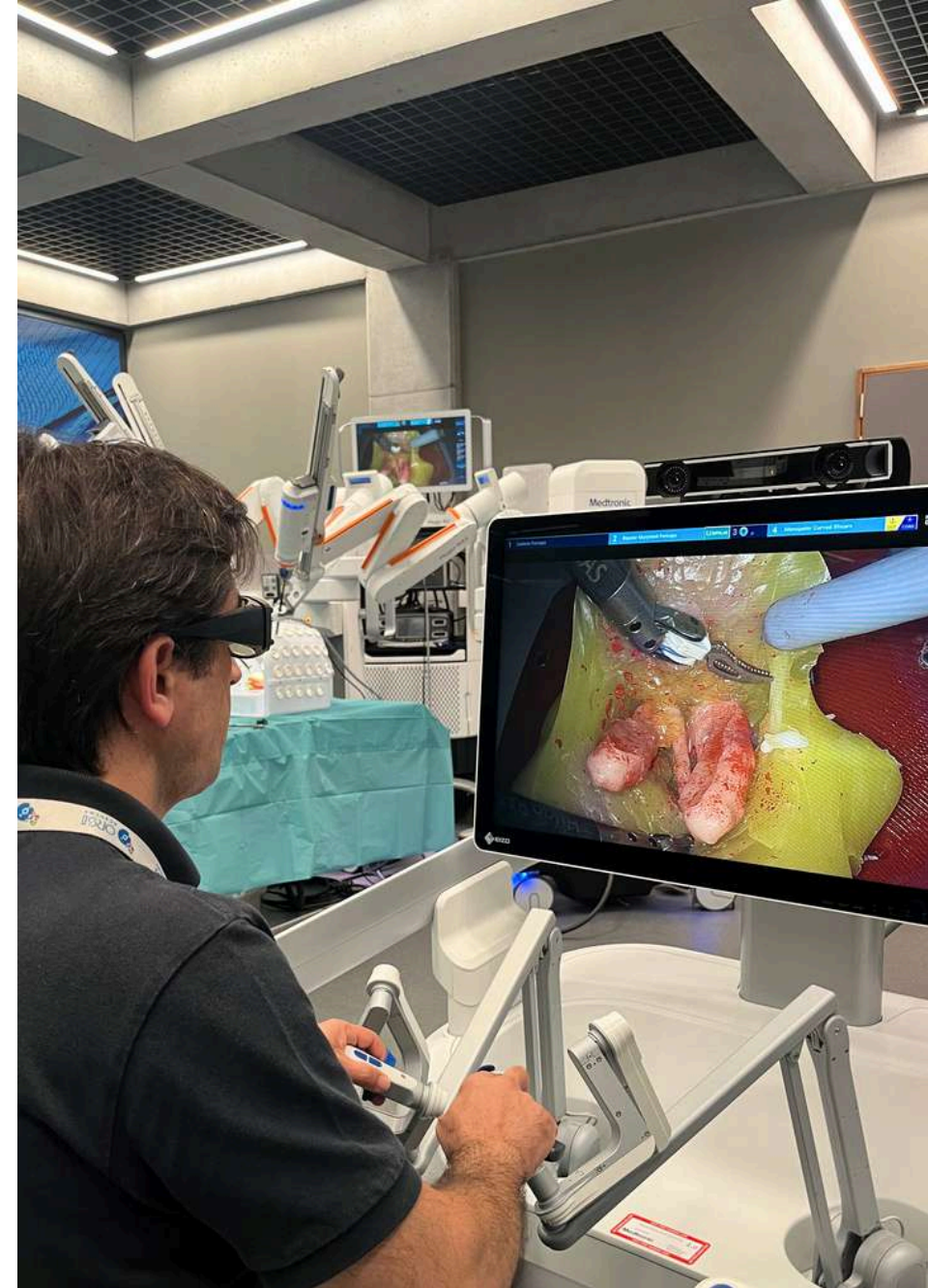
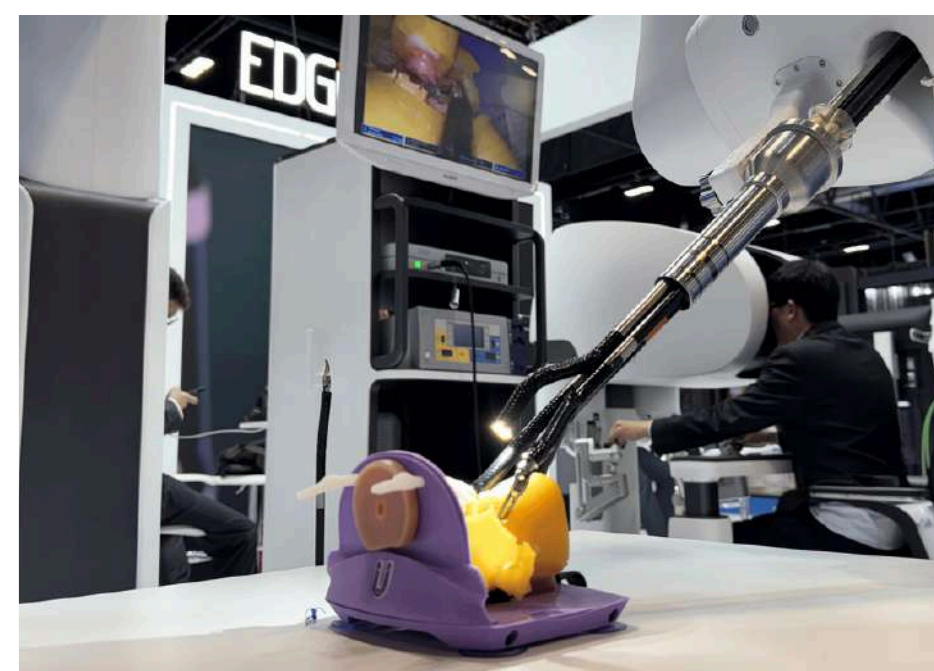
[@urotrainer](https://twitter.com/urotrainer)

Do you want to see Urotrainer in action?



Prostatectomy Simulation





UROTRAINER

Training is caring

UROTRAINER.COM

SIMULATION@UROTRAINER.COM

+34 634 48 2092