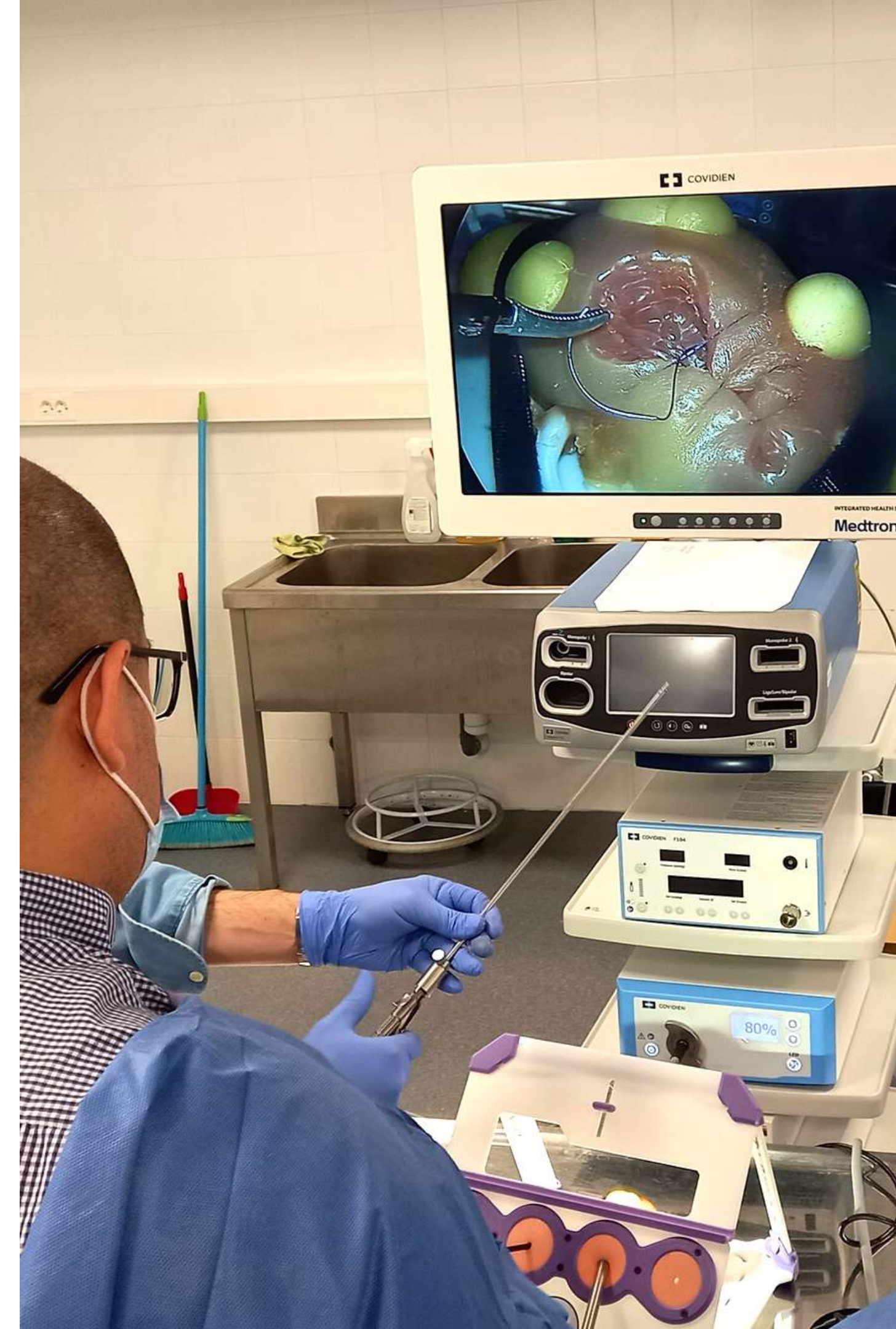


UROTRAINER

Advanced simulation for **partial nephrectomy** and
nerve-sparing **radical prostatectomy**

www.urotrainer.com

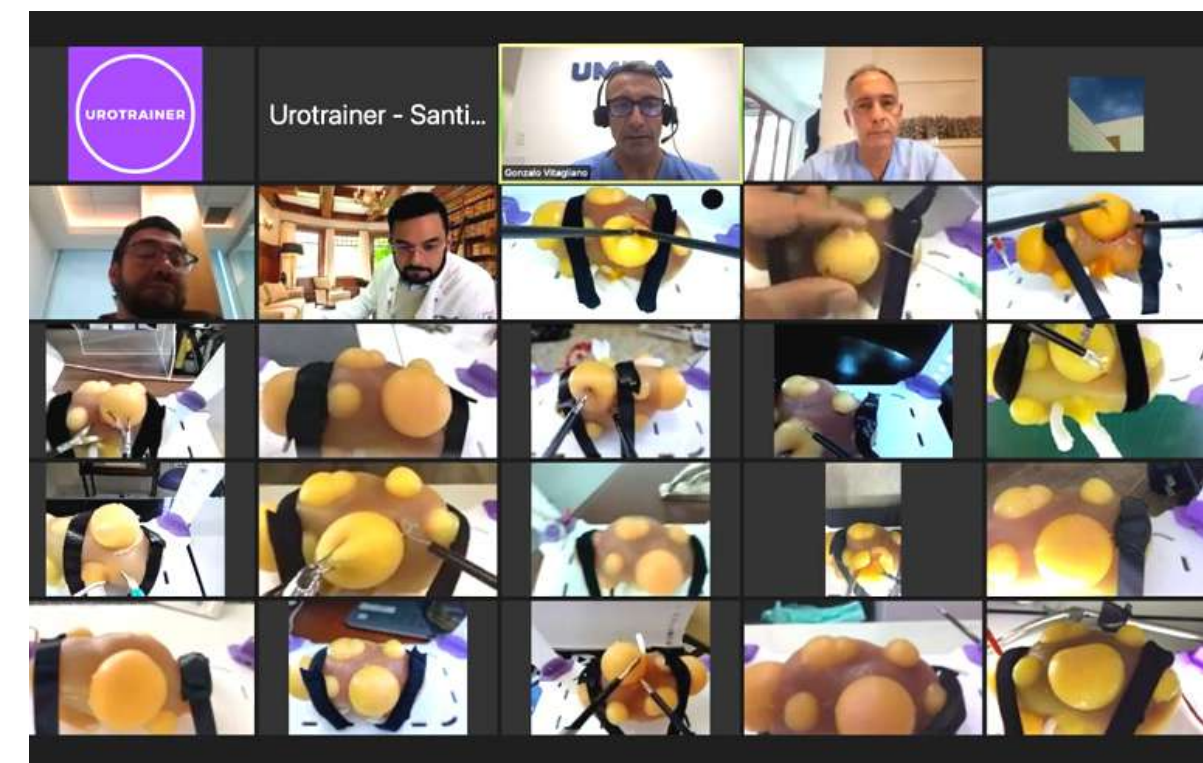
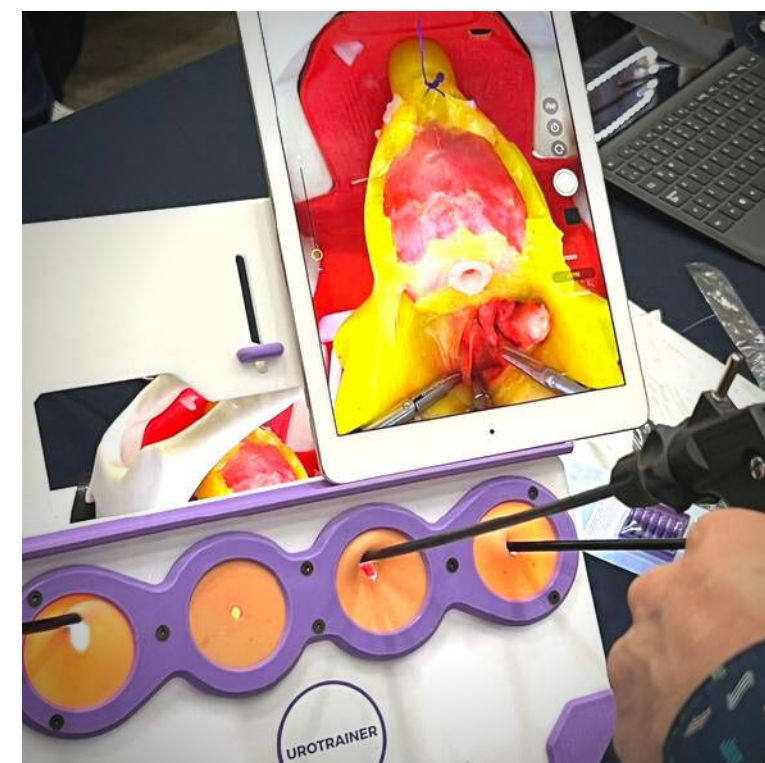


Surgical simulation for Uro-oncology

UROTRAINER is the new standard to practice **partial nephrectomy** and **radical prostatectomy**. It is a flexible solution both for novice and experienced urologists.

- **Hands-on courses:** Real-time tutorized training sessions with on-site or remote proctorship.
- **Training models:** Prostate and kidney simulation phantoms with optional lap trainers.

INNOVATIVE SIMULATION SOLUTIONS FOR HANDS-ON ROBOTIC AND LAPAROSCOPIC TRAINING



The new gold standard: **UROTRAINER**

UROTRAINER is a unique system for learning partial nephrectomy and radical prostatectomy.

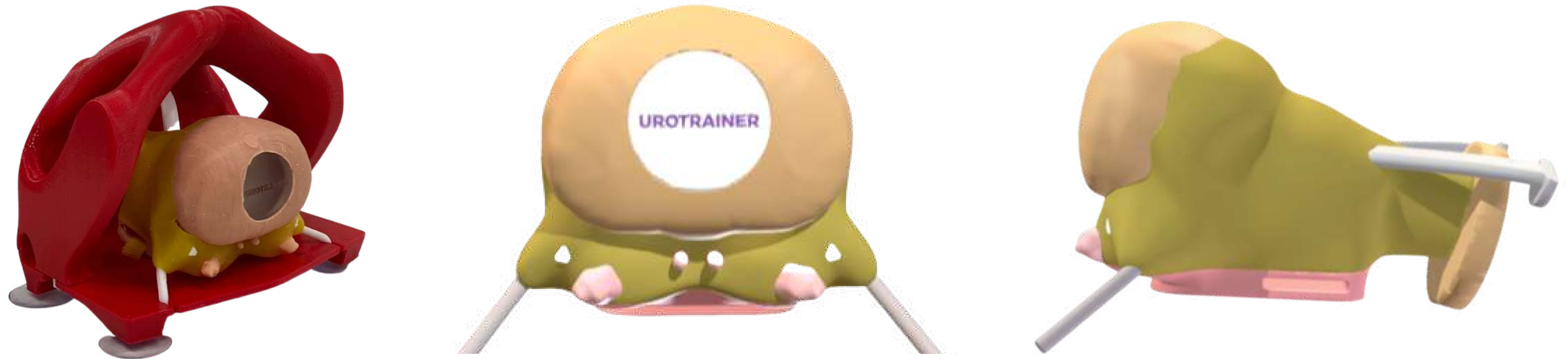
VK and VP simulators are **high-fidelity phantoms** to practice the **step-by-step** of these surgeries.

Developed for both novice and experienced surgeons that pursue **excellence in minimally invasive surgery.**



Hands-on training models - VP

VP prostate phantom for nerve-sparing radical prostatectomy



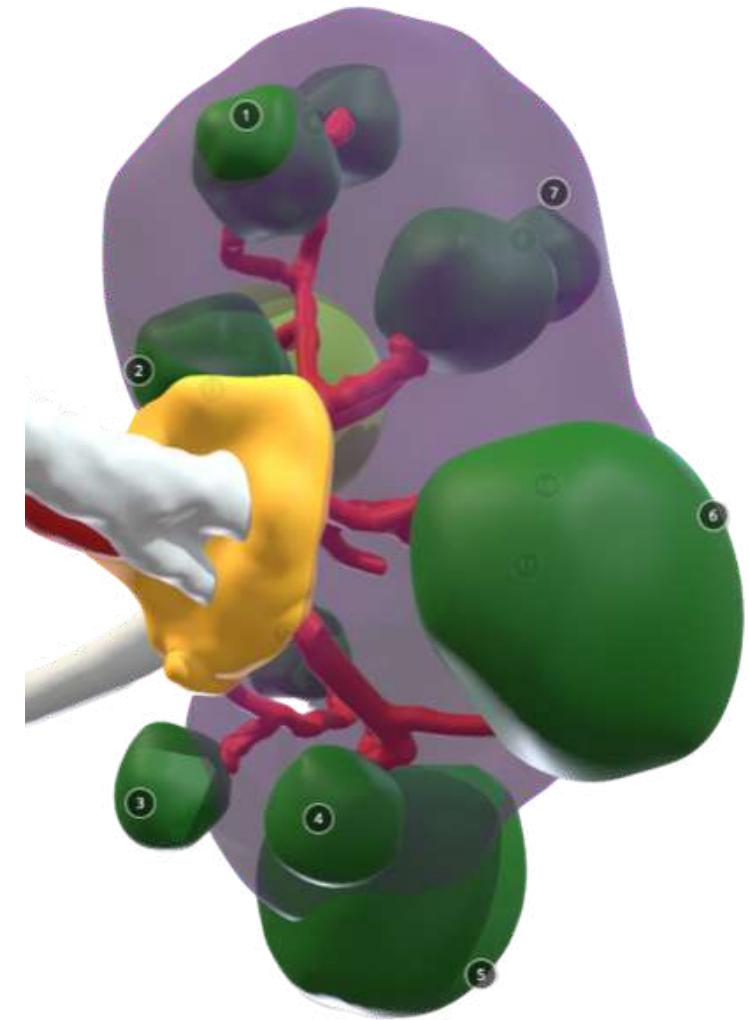
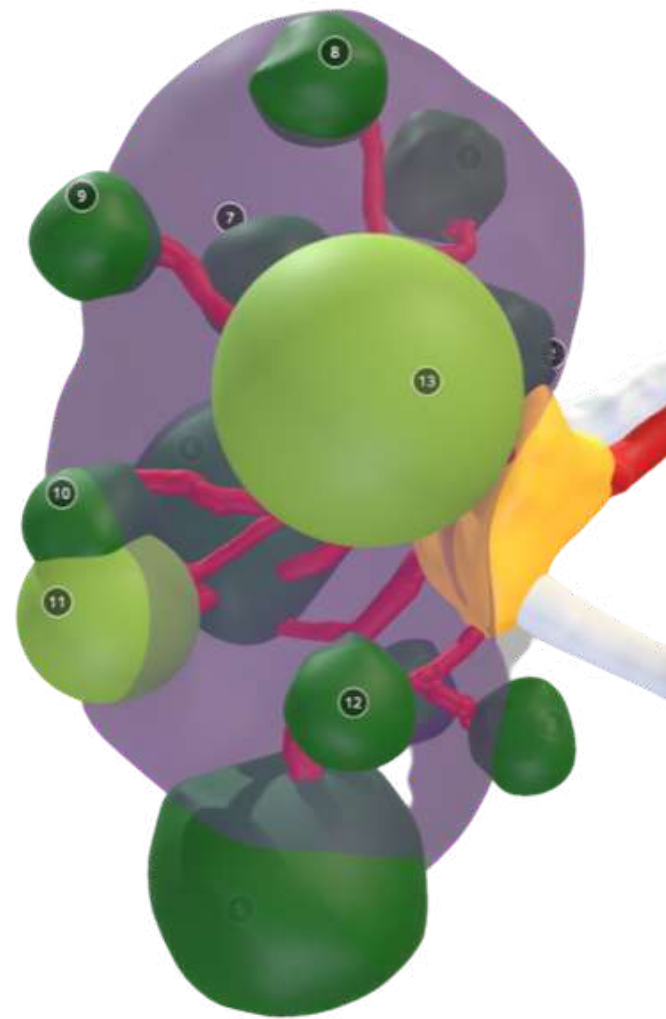
The model includes the bladder, neurovascular bundles, seminal vesicles, prostatic pedicles, puboprostatic ligaments, and dorsal venous complex. Modular section to practice vesicourethral anastomosis.



[CLICK FOR 360°/AR VIEW](#)

Hands-on training models - VK

VK kidney phantom for partial nephrectomy



Tumors RENAL scores are as follows: 1) 15mm 4a 2) 20mm 10xh 3) 15mm 7xh 4) 15mm 4a 5) 35mm 7x 6) 35mm 7a 7) 15mm 9x 8) 15mm 4p 9) 15 mm 5p 10) 16mm 7p 11) 15mm 4p

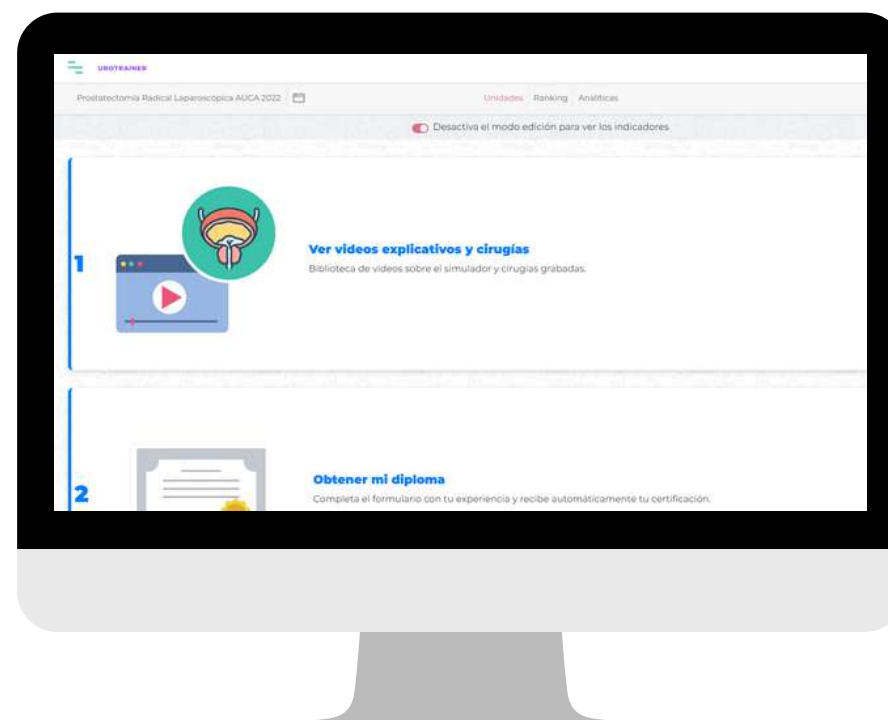
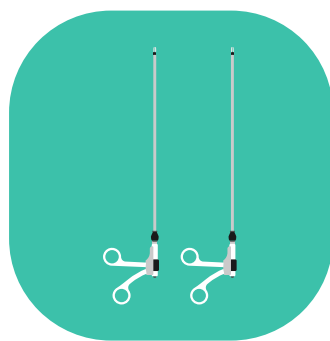
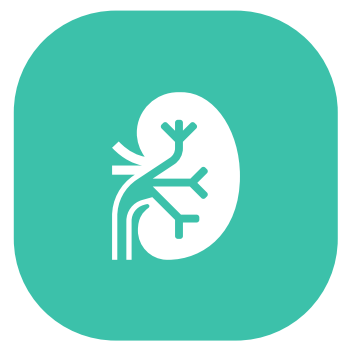
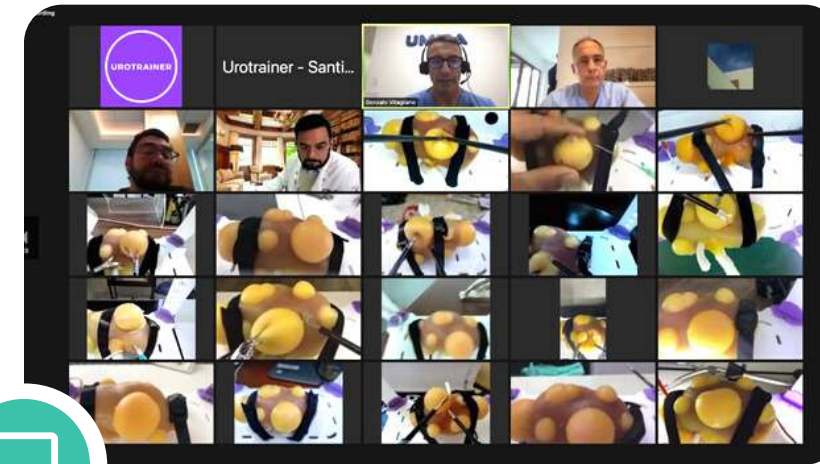
The whole model is surrounded by fat allowing different surgical scenarios.



[CLICK FOR 360°/AR VIEW](#)

Hands-on courses - Urotrainer Experience

On-site or remote hands-on training with real-time proctorship



How we support each hands-on course?

- Simulation models and laparoscopic boxes
- Surgical instruments (optional)
- Urotrainer proctors (usually combined with local proctors)
- Online platform with classes and surgical videos
- Flyers and videos for event promotion
- Certificate

Suggested Academic Program

Partial Nephrectomy Training - 4hs

INITIAL - Basic skills and small masses

- PN 1 - Tumor #4 15mm RENAL 4a
- PN 2 - Tumor #9 15mm RENAL 5p
- PN 3 - Cyst + Tumor #10 16mm RENAL 7p

ADVANCED - Complex tumors

- PN 1 - Tumor #6 35mm RENAL 7a
- PN 2 - Tumor #7 15mm RENAL 9x
- PN 3 - Tumor #2 20mm RENAL 10xh

90% hands-on activity. Each participant will complete at least 3 partial nephrectomies, training resection, vascular management, and suturing.

NS Radical Prostatectomy Training - 4hs

STEP 1: Theory + Hands-On

- Puboprostatic ligaments and dorsal venous complex management.

STEP 2: Theory + Hands-On

- Bladder neck.

STEP 3: Theory + Hands-On

- Prostatic pedicles and neurovascular bundles.

STEP 4: Theory + Hands-On

- Vesicourethral anastomosis.

90% hands-on activity. Each participant will have the chance to practice vesicourethral anastomosis twice.

Urotrainer's journey

UROTRAINER

Radical prostatectomy & Partial nephrectomy hands-on courses



MARCH 21

JULY 21

SEPTEMBER 21

NOVEMBER 21

FEBRUARY 22

First Urotrainer Course
16 urologist training remotely

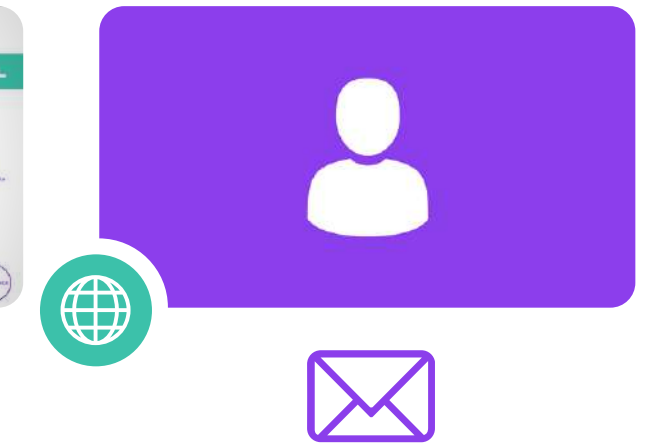
Course with CAU
41 urologist training remotely

doi.org/10.1097/JU.0000000000001966.02

AUA Scientific Validation

Course with AUCA
33 urologists training remotely

Course with AAU
20 urologists training remotely



MARCH 22

MAY 22

AUGUST 22

SEPTEMBER 22

OCTOBER 22

SET THE DATE!

Course with U. Salamanca
17 urologists training on-site

AUA22
UroResidency Challenge

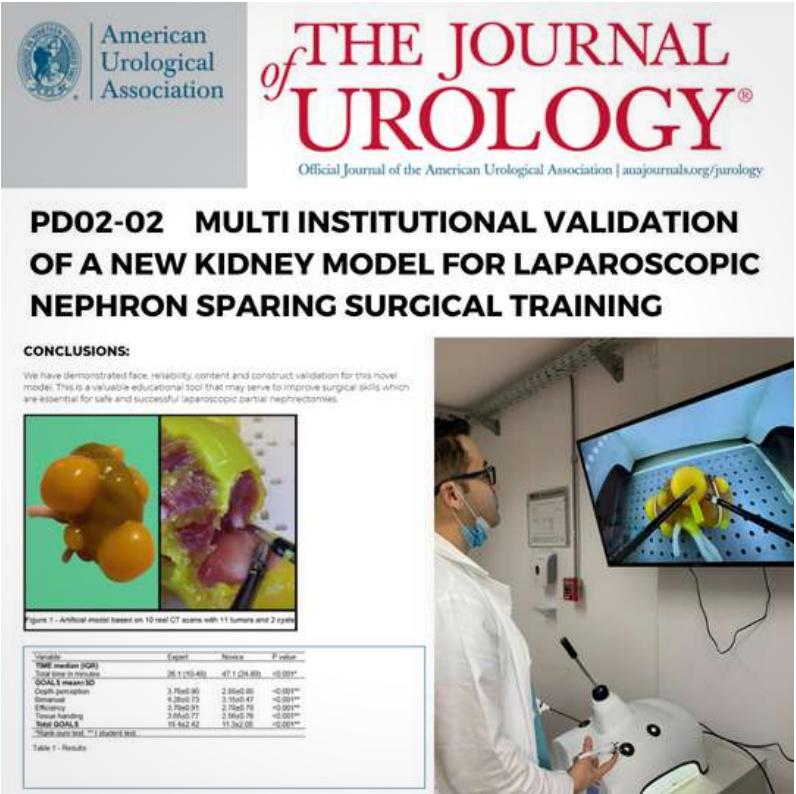
Course with CMUN
50 urologists training on-site

Course with AUCA
40 urologists training on-site

Course with CAU
40 urologists training on-site

Course together
simulation@urotrainer.com

International & Scientific Validation

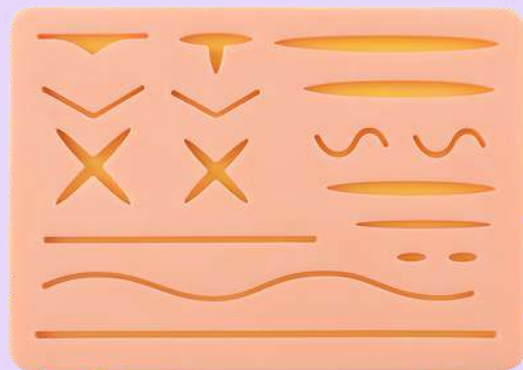


Clients & Partners



WHY Urotrainer ?

Superior training experience and flexibility



Multiple realistic scenarios with advanced levels for experienced surgeons. Suture pads or E-BLUS exercises are practical but not motivating.



Easy to manipulate and to stock compared to hydrogel models. Long expiration date (+12 months). No refrigeration needed.



Cost-effective: The kidney model allows at least 15 procedures while the prostate has a modular design to repeat vesicourethral anastomosis training.



Best way to showcase surgical equipment. High-realism and non-organic waste. Ethical cadaver-free simulation.



Collaborators

MEDICAL DIRECTOR

Dr. Gonzalo Vitagliano

Professor of Urology
Fellow in Laparoscopic Urology
Head of Uro-Oncology and Uro-Laparoscopy
German Hospital of Buenos Aires



Dr. Alvaro Juarez Soto

Head of Urology at Hospital de Jerez
Vicepresident Asociación Andaluza de Urología
Country coordinator of the Uro-Oncology Group
from the Spain Urology Association (AEU)



Dr. Clovis Fraga

Director Robotic Surgery - Htal. Português
de Beneficência em Pernambuco
Professor and instructor of Urology - IRCAD
Fellow in Advanced Laparoscopy and Robotic
Surgery - Clinique Saint Augustin



Dr. Alberto Jurado

Head of Renal Oncology and
Retroperitoneal Pathologies
Italian Hospital of Buenos Aires
Member of New York Section AUA



Dr. Miguel Gonzalez Dominguez

Head of Uro-oncology
Centro Médico Nacional de la Raza
Head of Robotic Surgery - Htal. Español
Professor of Urology - UNAM
Secretary - Colegio Nacional Mexicano de Urología



Dr. Alejandro Rodriguez

Chief of Urology and Urologic Oncology
Samaritan Medical Center
Fellow in Uro-Oncology and Laparoscopy
Université de Rennes I
General Secretary CAU



Dr. Elias Boddén

Director Robotic Surgery
Hospital Pacífica Salud Panamá
Fellow Advanced Laparoscopy
Clínica Santa María - Santiago de Chile
Former President Soc. Panameña de Urología



Dr. Manuel Diaz

Professor of Urology
Department of Uro-Oncology
Clínica Santa María - Santiago de Chile
Fellow in Laparoscopic Urology



Dr. Andres Correa

Assistant Professor
Department of Surgical Oncology
Division of Urology and Urologic Oncology
Fox Chase Cancer Center – Philadelphia, USA



Contact



simulation@urotrainer.com



+34 634 48 2092



www.urotrainer.com



[/company/urotrainer](https://www.linkedin.com/company/urotrainer)



[@urotrainer](https://www.instagram.com/urotrainer)



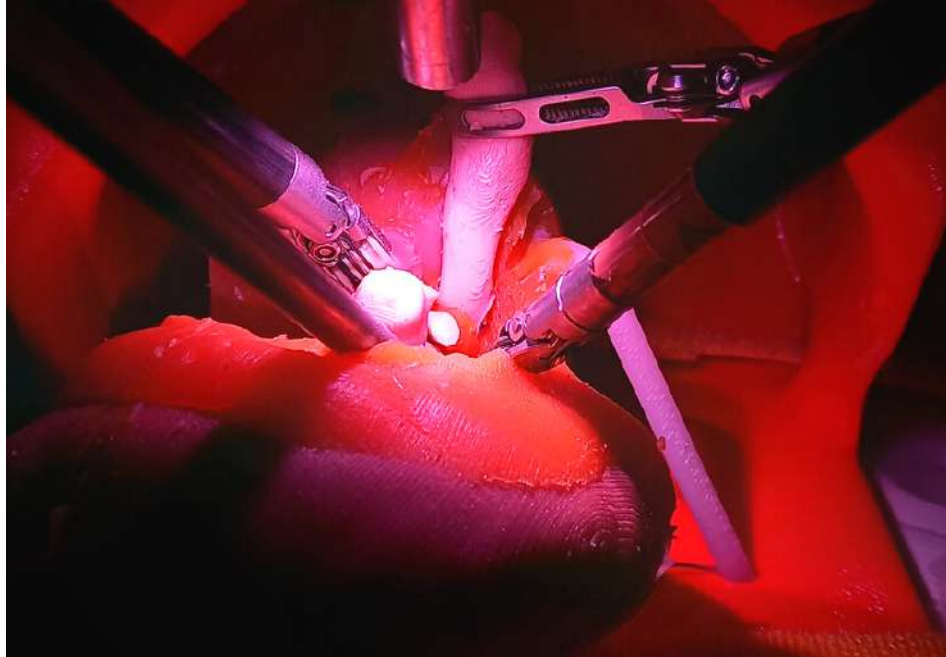
[@urotrainer](https://twitter.com/urotrainer)

Want to see Urotrainer in action?



Watch RARP simulation





Training is caring